



PearlFlex™



FABRICS

Cotton, Uncoated Polyester, Fabric Blends, Polyester/Acrylic, and Similar Fabrics - **Excluding Nylon**

SIZING

Available Widths (in.): 12", *16", and 20" (*16" - check availability)
Available Lengths (ft.): 15', 30', 45', 60', 90', and 162' rolls
Sheets: 12" x 20" (check sheet availability)

THICKNESS

3.9-4.3 mils/100-110 microns

Offers a smooth and soft shimmery finish. Stretchy and very durable.
Weeds easily - you can achieve very fine-detailed designs. Pressure-sensitive carrier enables easy weeding and repositioning.



SPECIAL PRECAUTIONS

*This product cannot be layered. **Starred colors are slightly translucent and will take on the color of the garment, especially on dark garments.



COLOR VARIATION

During manufacturing, color variation can occur between rolls. This is especially true for Neon colors.



TECH TIPS

For best results, perform test cuts.



MIRRORING

Cut this material into a mirror image.



CUTTING

45° Blade



TEMPERATURE

300°F



PRESSING | TIMING

Medium pressure | 8-10 seconds



PEELING

Peel cold



WASHING

Wash inside-out, cold water, gentle cycle, tumble dry low.



LASER COMPATIBLE

This product contains no PVC and will not emit hazardous fumes.



"It's best to test!" Pre-test on an inconspicuous area before applying final production. Some garments require pre-heating and treatment, such as blotting moisture-wicking material with rubbing alcohol, before pressing the material. Dye migration may occur with low-energy dyes in polyester and blend fabrics. Check for compatibility and pre-treatment suggestions with each product's instructions. The user assumes all risk and liability whatsoever in connection with the use of this product. Specialty Materials cannot guarantee performance for conditions not under the manufacturer's control and is not responsible for issues due to third-party material qualities. The Seller's and manufacturer's only obligation shall be to replace such quantity of the product proved to be defective by the manufacturer.

©2023 Specialty Materials & Digital Decoration, LLC. | A POLI-TAPE Company | All rights reserved | Tulsa, OK 74146 | 877-437-8556

Tech Help: tech@specialtymaterials.com | Sample Request: samples@specialtymaterials.com



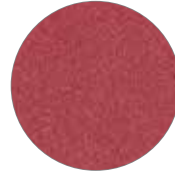
PearlFlex™



Silver
SMPF-01*



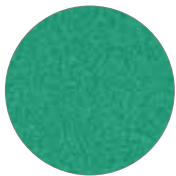
Gold
SMPF-02*



Red
SMPF-03*



Blue
SMPF-04*



Green
SMPF-05*



Pink
SMPF-06*



Purple
SMPF-07*



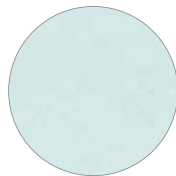
Black
SMPF-08*



White
SMPF-15*



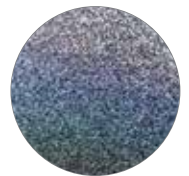
Clear
SMPF-16**



Holo Silver
SHMPF-21*



Holo Yellow
SHMPF-22**



Holo Black
SHMPF-28*

***This product cannot be layered beneath anything.**

****These colors are slightly translucent and will take on the color of the garment, especially on dark garments.**



@SpecialtyMaterials



@SpecialtyMaterials



@Specialtymaterials



@Spcltymtrl



@Thermoflex



@SpecialtyMaterials