



FASHIONFlex® PUFF



FABRICS

Cotton, Uncoated Polyester, Fabric Blends, Polyester/Acrylic, and Similar Fabrics - **Excluding Nylon**

SIZING

Available Widths (in.): 19.5" only
Available Lengths (ft.): 15', 30', 45', 60', and 81' roll

THICKNESS

4.9-6.7 mils/125-170 microns
Metallic: 12-20 mils/300-500 microns

FASHIONFlex® PUFF puffs up when pressed, and your design will be ready to impress! Easy to weed, easy to apply. Simple application instructions make it a breeze. The pressure-sensitive carrier enables easy weeding and repositioning.

We offer the most PUFF colors in the industry, and now, we have added Metallic PUFF to the line. Your designs will have a metallic sheen and stand out in a crowd. Go big, go bold, and be visually striking. Flex your creative muscle with the complete FASHIONFlex® PUFF line of products!

SPECIAL PRECAUTIONS

Cannot be layered. Clear plastic side needs to be face down while cutting. Peel up the corner of the carrier to determine this before cutting. Carrier can be shiny or matte, depending on the batch. Remove the carrier immediately after pressing. If the carrier or transfer sheet is left on, it can create inconsistencies in the puffed material.

PLEASE NOTE: Some application instructions for **Metallic PUFF** differ from standard PUFF. Those instances are noted below and have been tested for optimum results. Be sure to use the settings provided on your roll. Test before doing large runs.



MIRRORING

Cut this material into a mirror image.



CUTTING

45° Blade | **Metallic:** 60° Blade recommended



TEMPERATURE

All colors: 255°F - *275°F | Vary Puff effect by increasing or decreasing temperature by 10°F within range. | ***Metallic:** 275°F



PRESSING | TIMING

Medium pressure | 12-14 seconds | Start at 12; if more time is needed, press an additional 2 sec. | **Metallic:** 10 sec.



PEELING | *RE-PRESSING

Peel hot - remove the carrier and/or transfer sheet immediately. | ***Metallic:** Re-press for 4 seconds for maximum puff.



WASHING

Wash inside-out, cold water, gentle cycle. Tumble dry low.



LASER COMPATIBLE

This product contains no PVC and will not emit hazardous fumes.



COLOR VARIATION

During manufacturing, color variation can occur between rolls. This is especially true for Neon colors.



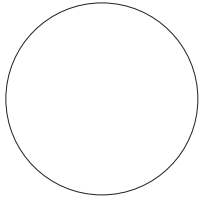
"It's best to test!" Pre-test on an inconspicuous area before applying final production. Some garments require pre-heating and treatment, such as blotting moisture-wicking material with rubbing alcohol, before pressing the material. Dye migration may occur with low-energy dyes in polyester and blend fabrics. Check for compatibility and pre-treatment suggestions with each product's instructions. The user assumes all risk and liability whatsoever in connection with the use of this product. Specialty Materials cannot guarantee performance for conditions not under the manufacturer's control and is not responsible for issues due to third-party material qualities. The Seller's and manufacturer's only obligation shall be to replace such quantity of the product proved to be defective by the manufacturer.

©2023 Specialty Materials & Digital Decoration, LLC. | A POLI-TAPE Company | All rights reserved | Tulsa, OK 74146 | 877-437-8556

Tech Help: tech@specialtymaterials.com | Sample Request: samples@specialtymaterials.com



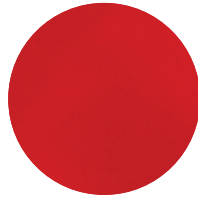
FASHIONFlex® PUFF



White
FFPU-PUFF 01



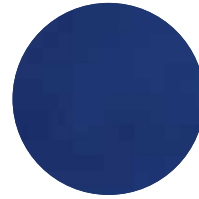
Black
FFPU-PUFF 02



Red
FFPU-PUFF 03



Green
FFPU-PUFF 04



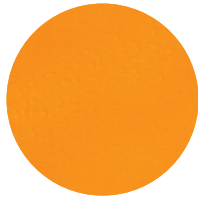
Royal Blue
FFPU-PUFF 05



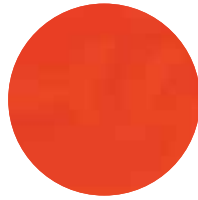
Metallic Silver
FFPU-PUFF M40



Navy Blue
FFPU-PUFF 06



Yellow
FFPU-PUFF 07



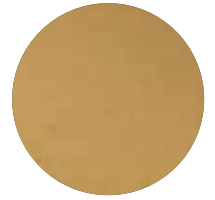
Orange
FFPU-PUFF 08



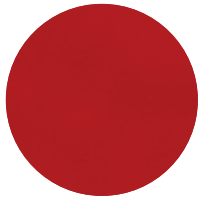
Grey
FFPU-PUFF 09



Dark Grey
FFPU-PUFF 10



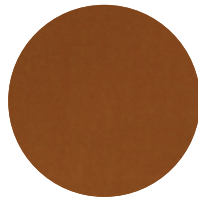
Metallic Gold
FFPU-PUFF M41



Burgundy
FFPU-PUFF 11



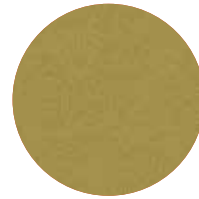
Purple
FFPU-PUFF 12



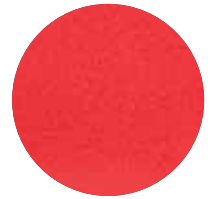
Camel
FFPU-PUFF 13



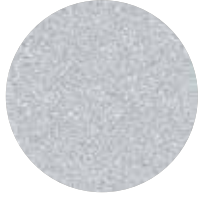
Khaki
FFPU-PUFF 14



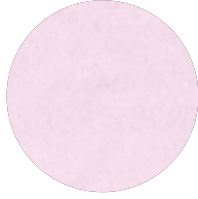
Gold
FFPU-PUFF 16



Metallic Red
FFPU-PUFF M42



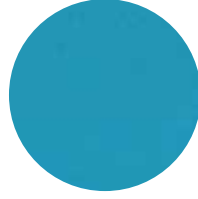
Silver
FFPU-PUFF 17



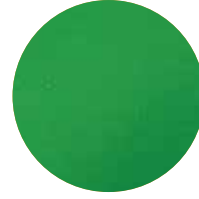
Lilac
FFPU-PUFF 18



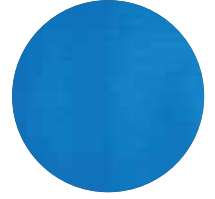
Pink
FFPU-PUFF 20



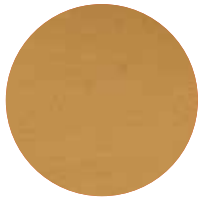
Light Blue
FFPU-PUFF 22



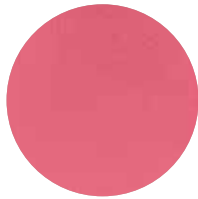
Emerald Green
FFPU-PUFF 23



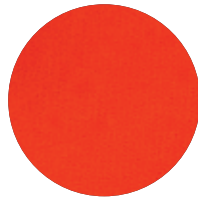
Metallic Royal Blue
FFPU-PUFF M43



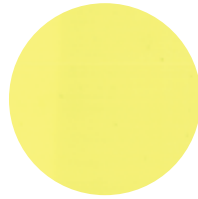
Coffee
FFPU-PUFF 24



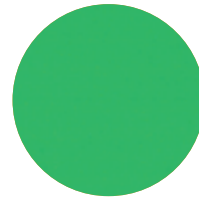
Dark Pink
FFPU-PUFF 25



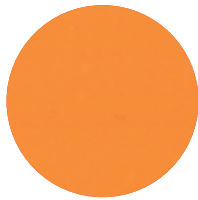
Vivid Orange
FFPU-PUFF 26



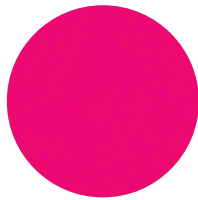
Neon Yellow
FFPU-PUFF 30



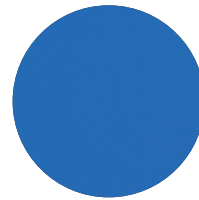
Neon Green
FFPU-PUFF 32



Neon Orange
FFPU-PUFF 34



Neon Pink
FFPU-PUFF 36



Neon Blue
FFPU-PUFF 38



@SpecialtyMaterials



@SpecialtyMaterials



@Specialtymaterials



@Spcltymtrl



@Thermoflex



@SpecialtyMaterials