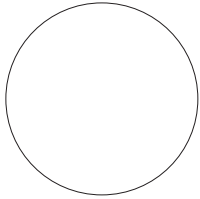




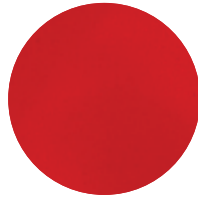
FASHIONFlex® PUFF



White
FFPU-PUFF 01



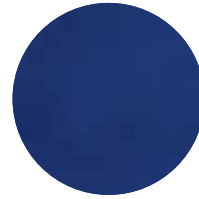
Black
FFPU-PUFF 02



Red
FFPU-PUFF 03



Green
FFPU-PUFF 04



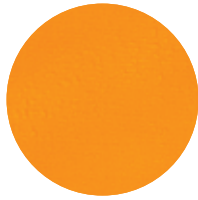
Royal Blue
FFPU-PUFF 05



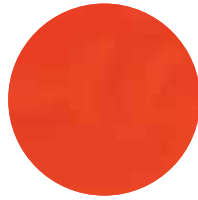
Metallic Silver
FFPU-PUFF M40



Navy Blue
FFPU-PUFF 06



Yellow
FFPU-PUFF 07



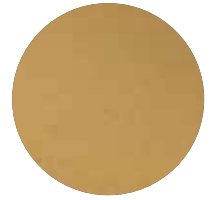
Orange
FFPU-PUFF 08



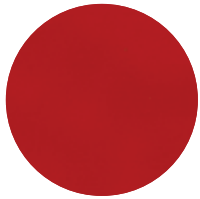
Grey
FFPU-PUFF 09



Dark Grey
FFPU-PUFF 10



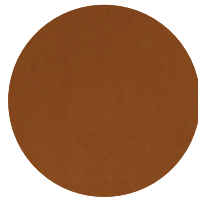
Metallic Gold
FFPU-PUFF M41



Burgundy
FFPU-PUFF 11



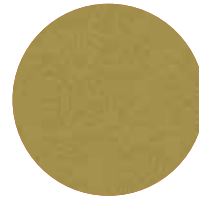
Purple
FFPU-PUFF 12



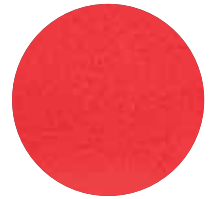
Camel
FFPU-PUFF 13



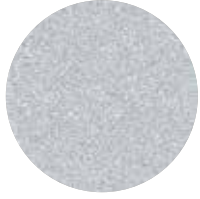
Khaki
FFPU-PUFF 14



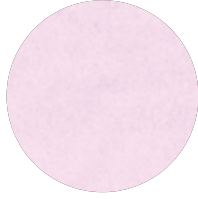
Gold
FFPU-PUFF 16



Metallic Red
FFPU-PUFF M42



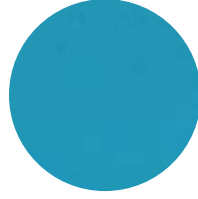
Silver
FFPU-PUFF 17



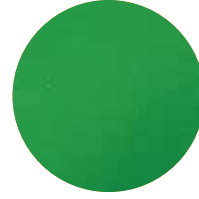
Lilac
FFPU-PUFF 18



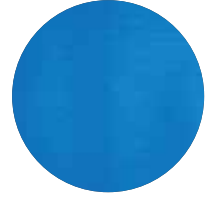
Pink
FFPU-PUFF 20



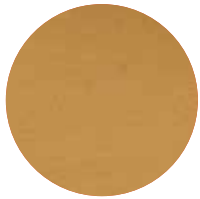
Light Blue
FFPU-PUFF 22



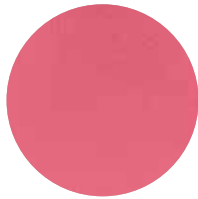
Emerald Green
FFPU-PUFF 23



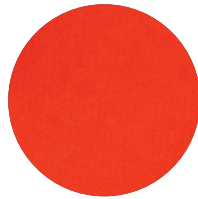
Metallic Royal Blue
FFPU-PUFF M43



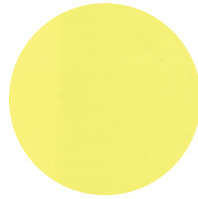
Coffee
FFPU-PUFF 24



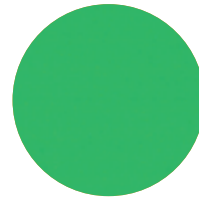
Dark Pink
FFPU-PUFF 25



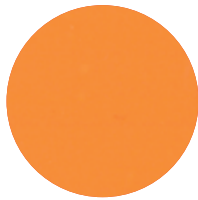
Vivid Orange
FFPU-PUFF 26



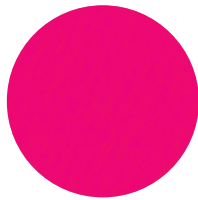
Neon Yellow
FFPU-PUFF 30



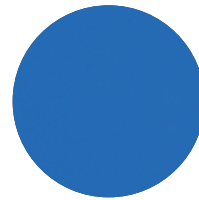
Neon Green
FFPU-PUFF 32



Neon Orange
FFPU-PUFF 34



Neon Pink
FFPU-PUFF 36



Neon Blue
FFPU-PUFF 38



@SpecialtyMaterials



@SpecialtyMaterials



@Specialtymaterials



@Spcltymtrl



@Thermoflex



@SpecialtyMaterials

FASHIONFlex® PUFF

FABRICS

Cotton, Uncoated Polyester, Fabric Blends, Polyester/Acrylic, and Similar Fabrics - **Excluding Nylon**

SIZING

Available Widths (in.): 19.5" only
Available Lengths (ft.): 15', 30', 45', 60', and 81' rolls

THICKNESS

4.9-6.7 mils/125-170 microns

PLEASE NOTE:

Be sure to use the settings provided with your roll. Test before doing large runs. Carrier can be shiny or matte, depending on batch. Peel corner to determine which side is material and cut carrier side down

SPECIAL PRECAUTIONS

Cannot be layered. Clear plastic side needs to be face down while cutting. Peel up the corner of the carrier to determine this before cutting. Carrier can be shiny or matte, depending on the batch. Remove the carrier immediately after pressing. If the carrier or transfer sheet is left on, it can create inconsistencies in the puffed material.

PLEASE NOTE: Some application instructions for **Metallic PUFF** differ from standard **PUFF**. Those instances are noted below and have been tested for optimum results. Be sure to use the settings provided on your roll. Test before doing large runs.

MIRRORING

Cut this material into a mirror image.



CUTTING

45° Blade | **Metallic:** 60° Blade recommended



TEMPERATURE

All colors: 255°F - *275°F | Vary Puff effect by increasing or decreasing temperature by 10°F within range. | ***Metallic:** 275°F



PRESSING | TIMING

Medium pressure | 12-14 seconds | Start at 12; if more time is needed, press an additional 2 sec. | **Metallic:** 10 sec.



PEELING | *RE-PRESSING

Peel hot - remove the carrier and/or transfer sheet immediately. | ***Metallic:** Re-press for 4 seconds for maximum puff.



WASHING

Wash inside-out, cold water, gentle cycle. Tumble dry low.



LASER COMPATIBLE

This product contains no PVC and will not emit hazardous fumes.



COLOR VARIATION

During manufacturing, color variation can occur between rolls. This is especially true for Neon colors.



White FFPU-PUFF 01	Black FFPU-PUFF 02	Red FFPU-PUFF 03	Green FFPU-PUFF 04	Royal Blue FFPU-PUFF 05	Navy Blue FFPU-PUFF 06	Yellow FFPU-PUFF 07
Orange FFPU-PUFF 08	Grey FFPU-PUFF 09	Dark Grey FFPU-PUFF 10	Burgundy FFPU-PUFF 11	Purple FFPU-PUFF 12	Camel FFPU-PUFF 13	Khaki FFPU-PUFF 14
Gold FFPU-PUFF 16	Silver FFPU-PUFF 17	Lilac FFPU-PUFF 18	Pink FFPU-PUFF 20	Light Blue FFPU-PUFF 22	Emerald Green FFPU-PUFF 23	Coffee FFPU-PUFF 24
Dark Pink FFPU-PUFF 25	Vivid Orange FFPU-PUFF 26	Neon Yellow FFPU-PUFF 30	Neon Green FFPU-PUFF 32	Neon Orange FFPU-PUFF 34	Neon Pink FFPU-PUFF 36	Neon Blue FFPU-PUFF 38
Metallic Red FFPU-PUFF M42	Metallic Gold FFPU-PUFF M41	Metallic Silver FFPU-PUFF M40	Metallic Royal Blue FFPU-PUFF M43			