



# DecoFILM® Soft Metallics



## FABRICS

Cotton, Uncoated Polyester, Fabric Blends, Wool, Linen - **Excluding Nylon, treated or dyed garments**

## SIZING

Available Widths (in.): 19.5" only  
Available Lengths (ft.): 15', 30', 45', 60', 90', and 162' rolls

## THICKNESS

3 mils/75 microns

Offers a textured, chrome-like surface. Durable and easy to cut and weed.  
Add a fun unexpected metallic finish to your designs. The pressure-sensitive carrier allows easy repositioning.

### SPECIAL PRECAUTIONS

**! AFTER WASHING**, ALWAYS IRON INSIDE OUT - DO NOT IRON DIRECTLY ON THE FILM. WE DO NOT RECOMMEND LAYERING THIS MATERIAL. **Note: 1)** Re-pressing keeps the material looking consistent throughout wash cycles, but it will have more of a brushed metal appearance. **2)** Splices in rolls may cause the material to conform around the edges of splice tape, but this will not affect plotter cutting or the finished look. **3)** The **white** is translucent. **4)** The following colors **are translucent** in some areas, and garment color will show through **Green/Black Camo, Earthtone Camo, Grey Camo, and Blue/Black Camo**. **5)** The following colors **are slightly translucent** but do not appear to show garment color when pressed: **Rainbow Oil, Leopard Silver, and Leopard Gold**. **6)** The **Holoshine** colors have a horizontal line going down the middle of the roll, and a vertical line occurs every 29.5". This is part of the manufacturing process and is not a defect.



### COLOR VARIATION

During manufacturing, color variation can occur between rolls. This is especially true for Neon colors.



### MIRRORING

Cut this material into a mirror image.



### CUTTING

45° Blade Recommended



### TEMPERATURE

302°F-320°F



### PRESSING | TIMING

Firm pressure | 7-8 seconds



### PEELING | RE-PRESS

Peel cold, cover with a PTFE sheet, and re-press for 3-5 seconds.



### WASHING

Wash inside out, gentle cycle, cold water, tumble dry, low heat.



### LASER COMPATIBLE

This product contains no PVC and will not emit hazardous fumes.



**"It's best to test!"** Pre-test on an inconspicuous area before applying final production. Some garments require pre-heating and treatment, such as blotting moisture-wicking material with rubbing alcohol, before pressing the material. Dye migration may occur with low-energy dyes in polyester and blend fabrics. Check for compatibility and pre-treatment suggestions with each product's instructions. The user assumes all risk and liability whatsoever in connection with the use of this product. Specialty Materials cannot guarantee performance for conditions not under the manufacturer's control and is not responsible for issues due to third-party material qualities. The Seller's and manufacturer's only obligation shall be to replace such quantity of the product proved to be defective by the manufacturer.

©2023 Specialty Materials & Digital Decoration, LLC. | A POLI-TAPE Company | All rights reserved | Tulsa, OK 74146 | 877-437-8556

Tech Help: [tech@specialtymaterials.com](mailto:tech@specialtymaterials.com) | Sample Request: [samples@specialtymaterials.com](mailto:samples@specialtymaterials.com)



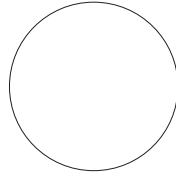
# DecoFILM® Soft Metallics



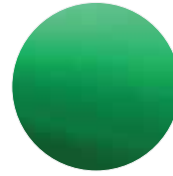
**Silver**  
DFSM-01



**Gold**  
DFSM-02



**White**  
DFSM-03



**Green**  
DFSM-04



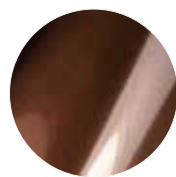
**Blue**  
DFSM-05



**Black**  
DFSM-06



**Matte Black**  
DFSM-07



**Brown**  
DFSM-08



**Red**  
DFSM-09



**Matte Red**  
DFSM-10



**Aqua**  
DFSM-13



**Cherry**  
DFSM-14



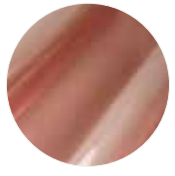
**Matte Silver**  
DFSM-15



**Charcoal**  
DFSM-16



**Light Brown**  
DFSM-17



**Rose Gold**  
DFSM-20



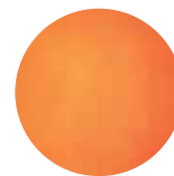
**Pink**  
DFSM-22



**Purple**  
DFSM-23



**Copper**  
DFSM-24



**Burnt Orange**  
DFSM-25



**Light Gold**  
DFSM-32



**Plaid**  
DFSMP-101



**Cheetah**  
DFSMP-102



**Snake**  
DFSMP-103



**Fuzzy**  
DFSMP-104



**Leopard Silver**  
DFSMP-116



**Leopard Gold**  
DFSMP-117



@SpecialtyMaterials



@SpecialtyMaterials



@Specialtymaterials



@Spcltymtrl



@Thermoflex



@SpecialtyMaterials



# DecoFILM® Soft Metallics



Rainbow Multi DFSMP-114



Rainbow Round DFSMP-115



Rainbow Galaxy Stripes DFSMP-129



Green/Black Camo  
DFSMP-109



Rainbow Camo  
DFSMP-110



Earthtone Camo  
DFSMP-111



Grey Camo  
DFSMP-112



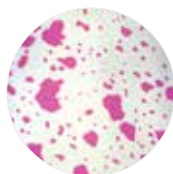
Blue/Black Camo  
DFSMP-113



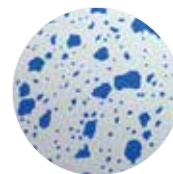
Silver Roses  
DFSMP-118



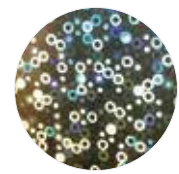
Gold Roses  
DFSMP-119



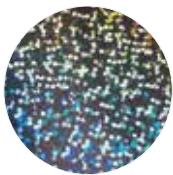
Pink Splash  
DFSMP-120



Blue Splash  
DFSMP-130



Bubble Gold  
DFSMP-121



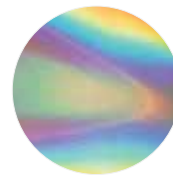
Galaxy Silver  
DFSMP-122



Glass Silver  
DFSMP-123



Silver Holoshine  
DFSMP-124\*



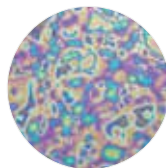
Gold Holoshine  
DFSMP-125\*



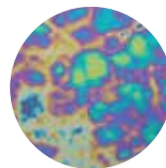
Red Holoshine  
DFSMP-132\*



Rainbow Oil  
DFSMP-126



Bubble Oil  
DFSMP-127



Marble Oil  
DFSMP-128



Flowers  
DFSMP-131

\* Please note: the Holoshine colors have a horizontal line going down the middle of the roll and a vertical line approximately every 29.5". This was part of the manufacturing process and is not a defect.



@SpecialtyMaterials



@SpecialtyMaterials



@Specialtymaterials



@Spcltymtrl



@Thermoflex



@SpecialtyMaterials